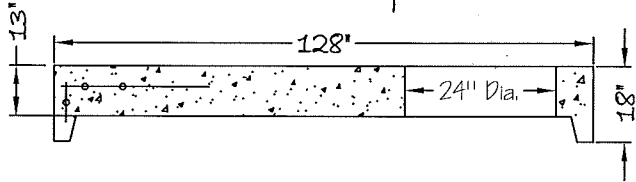
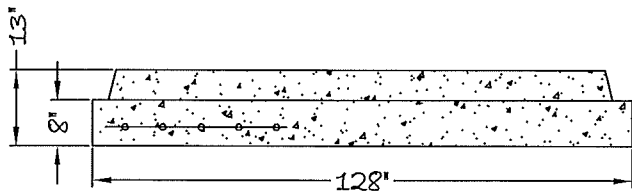
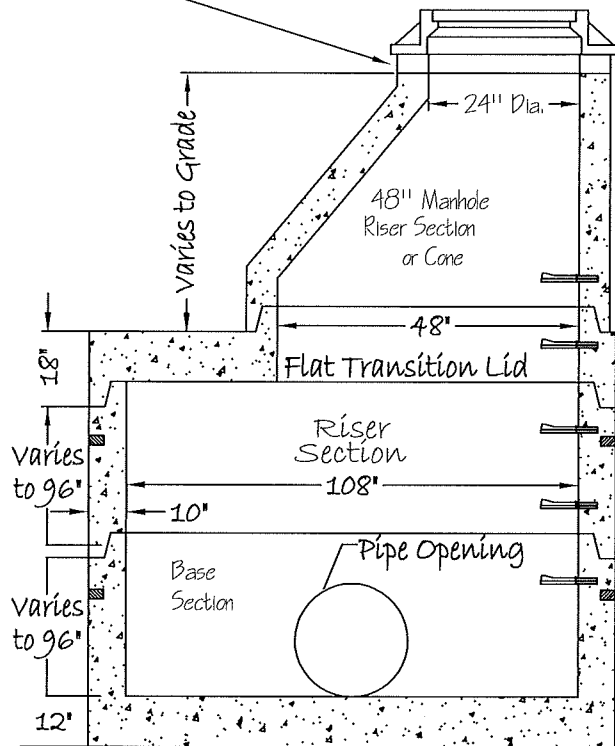


### Flat Top



Adjust to Grade as Required  
with Riser Rings 2", 3", 4" or 6"



### Separate Base

#### Notes:

1. All concrete to be a minimum of 4500 psi @ 28 days.
2. Manufactured in accordance with ASTM C-478 and INDOT Spec. 907.04.
3. Manhole joints to be Tongue and Groove with Butyl Rubber Sealant, or Off-set Gasket per ASTM C-443.
4. Manhole steps are 1/2" Steel Reinforced with polypropylene plastic coating at 12" to 16" spacing.
5. Lifting holes require plugging before testing.
6. Pipe Connections available in Grouted Pipe Connections, Boots, or A-Lok's.
7. All reinforcing steel meets or exceeds ASTM C-478.
8. Base sections come standard with 12" thick monolithic base.
9. Flat top comes standard with 24" diameter opening. Other sizes are available on request.

#### WEIGHTS:

Wall = 3,852 #/ft  
 Base = 10,290 #  
 Separate Base = 12,536 #  
 Flat Top = 13,977 #  
 Transitional Lid = 13,432 #

PRECAST CONCRETE

108" DIA. MANHOLE

**MIDWEST TILE & CONCRETE PRODUCTS, INC.**

www.midwesttile.net

4309 Webster Road  
 Woodburn IN 46797  
 Phone: 260-749-5173  
 Fax: 260-493-2477

6209 Ardmore Ave  
 Fort Wayne IN 46809  
 Phone: 260-478-9098  
 Fax: 260-478-6738

Drawing Name:  
72MH.DWG

Date:  
1/25/17

Revised:  
Kyle Rothenbuhler



**NPCA**  
CERTIFIED PLAN