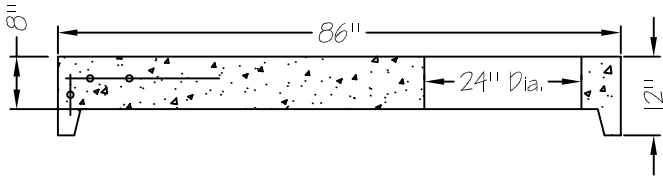
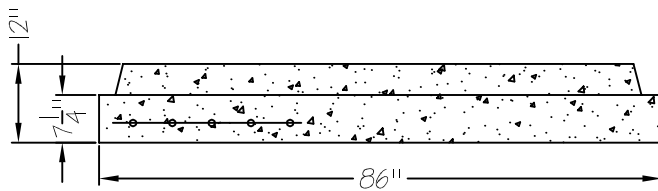
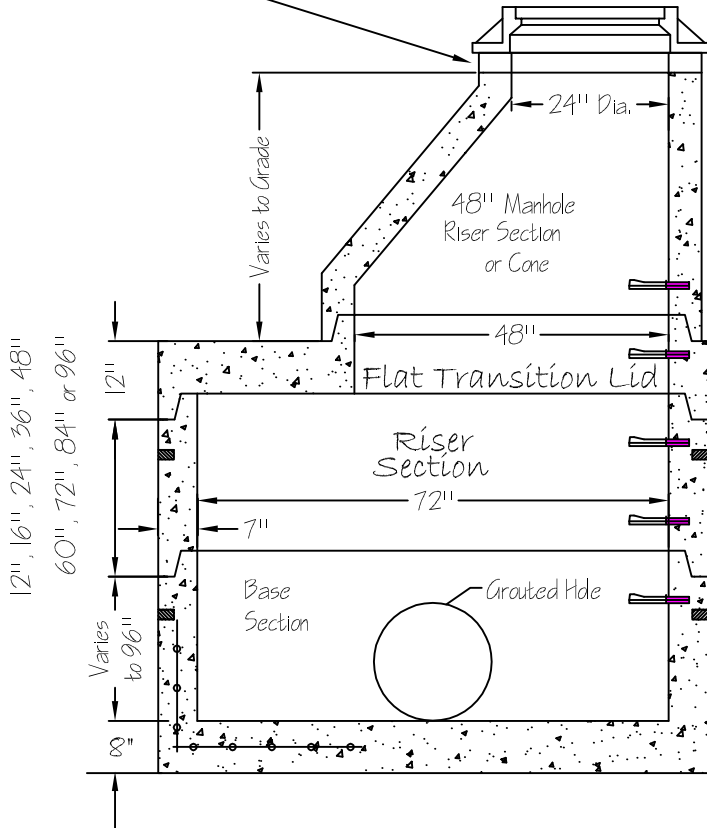


Flat Top



Adjust to Grade as Required
with Riser Rings 2", 3", 4" or 6"



Separate Base

Notes:

1. All concrete to be a minimum of 4500 psi @ 28 days.
2. Manufactured in accordance with ASTM C-478 and INDOT Spec. 907.04.
3. Manhole joints to be Tongue and Groove with Butyl Rubber Sealant per ASTM C-443.
4. Manhole steps are 1/2" Steel Reinforced with polypropylene plastic coating at 12" to 16" spacing.
5. Lifting holes require plugging before testing.
6. Pipe Connection available is Non-Shrink Grout.
7. Pre-poured inverts are available on request.
8. All reinforcing steel meets or exceeds ASTM C-478.
9. Base sections come standard with 8" thick monolithic base.
10. Flat top comes standard with 24" diameter opening. Other sizes are available on request.

WEIGHTS:

- Wall = 1800 #/ft
- Base = 3000 #
- Separate Base = 5780 #
- Flat Top = 4100 #
- Transitional Lid = 2675 #

PRECAST CONCRETE

72" DIA. MANHOLE
w/Hole



www.midwesttile.net

4309 Webster Road
Woodburn IN 46797
Phone: 260-749-5173
Fax: 260-493-2477

6209 Ardmore Ave
Fort Wayne IN 46809
Phone: 260-478-9098
Fax: 260-478-6738

Drawing Name:

72MH.DWG

Date:

01/24/2014

Revised:

Kyle Rothenbuhler



NPCA
CERTIFIED PLANT