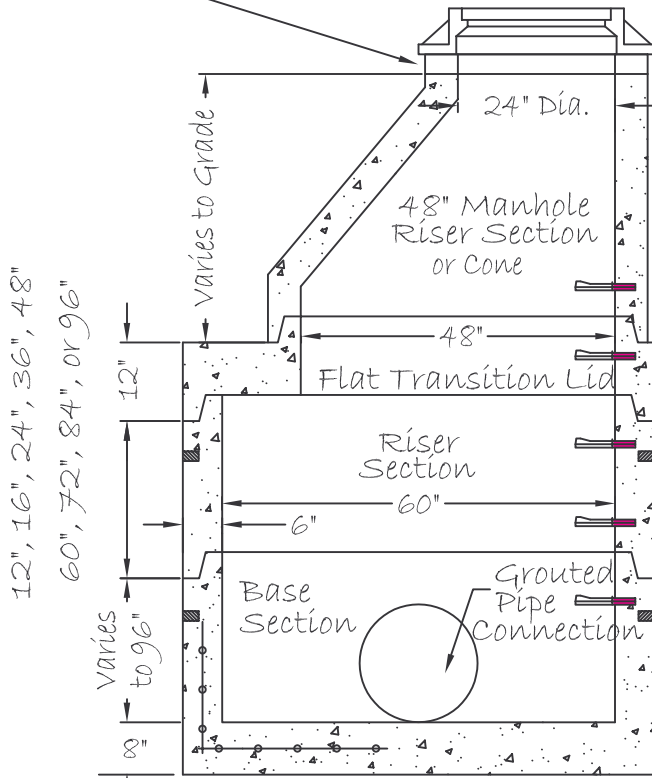
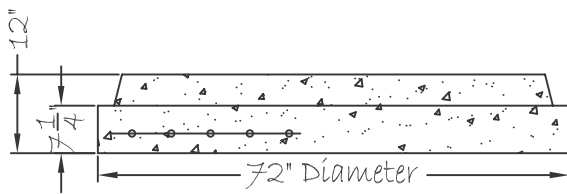


Adjust to Grade as Required
with Riser Rings 2", 3", 4" or 6"



12", 16", 24", 36", 48"
60", 72", 84", or 96"



Separate Base

Notes:

1. All concrete to be a minimum of 4500 psi @ 28 days.
2. Manufactured in accordance with ASTM C-478 and INDOT Spec. 907.04.
3. Manhole joints to be Tongue and Groove with Butyl Rubber Sealant
4. Manhole steps are 1/2" Steel Reinforced with polypropylene plastic coating at 12" to 16" spacing.
5. Lifting holes require plugging before testing.
6. Pipe Connections are Non-Shrink Grout by Contractor.
7. All reinforcing steel meets or exceeds ASTM C-478.
8. Base is poured into riser section. Separate base and Flat Top is available on request. Base section is to be set per job specifications.
9. Flat top comes standard with 24" diameter opening. Other sizes are available on request.

WEIGHTS:

- Wall = 1300 #/ft
- Base = 2300 #
- Separate Base = 4000 #
- Flat Top = 3000 #
- Transitional Lid = 1900 #

PRECAST CONCRETE

60" DIA. MANHOLE
W/HOLES



4309 Webster Road
Woodburn IN 46797
Phone: 260-749-5173
Fax: 260-493-2477

6209 Ardmore Ave
Fort Wayne IN 46809
Phone: 260-478-9098
Fax: 260-478-6738

Drawing Name:
60MH.DWG

Date:
01/22/2007

Revised:
3/6/2013

Drawn by:
Kyle Rothenbuhler

Checked by:
Jeff Kiess



NPCA
CERTIFIED PLANT