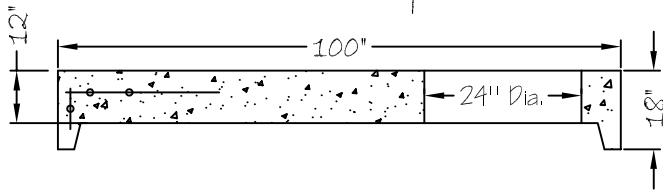
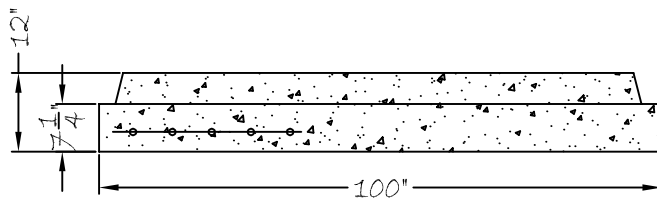
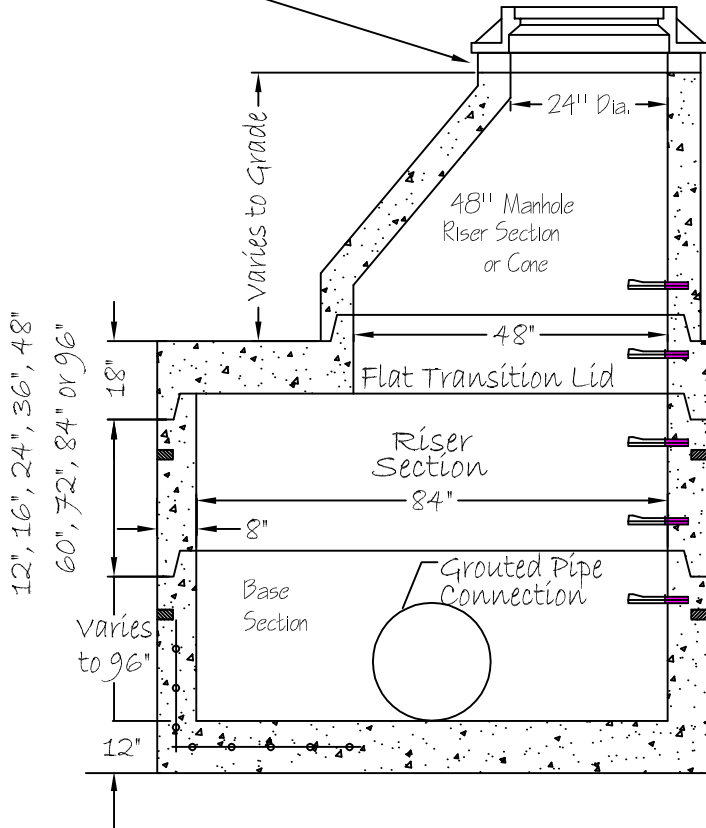


Flat Top



Adjust to Grade as Required
with Riser Rings 2", 3", 4" or 6"



Separate Base

Notes:

1. All concrete to be a minimum of 4500 psi @ 28 days.
2. Manufactured in accordance with ASTM C-478 and INDOT Spec. 907.04.
3. Manhole joints to be Tongue and Groove with Butyl Rubber Sealant per ASTM C-443.
4. Manhole steps are 1/2" Steel Reinforced with polypropylene plastic coating at 12" to 16" spacing.
5. Lifting holes require plugging before testing.
6. Pipe Connections are Grouted Pipe Connections.
7. All reinforcing steel meets or exceeds ASTM C-478.
8. Base sections come standard with 8" thick monolithic base.
9. Flat top comes standard with 24" diameter opening. Other sizes are available on request.

WEIGHTS:

- Wall = 2410 #/ft
- Base = 4400 #
- Separate Base = 7700 #
- Flat Top = 8300 #
- Transitional Lid = 6800 #

PRECAST CONCRETE

84" DIA. MANHOLE
w/Holes



www.midwesttile.net

4309 Webster Road
Woodburn IN 46797
Phone: 260-749-5173
Fax: 260-493-2477

6209 Ardmore Ave
Fort Wayne IN 46809
Phone: 260-478-9098
Fax: 260-478-6738

Drawing Name:
72MH.DWG

Date:
01/24/2014

Revised:
Kyle Rothenbuhler



NPCA
CERTIFIED PLANT