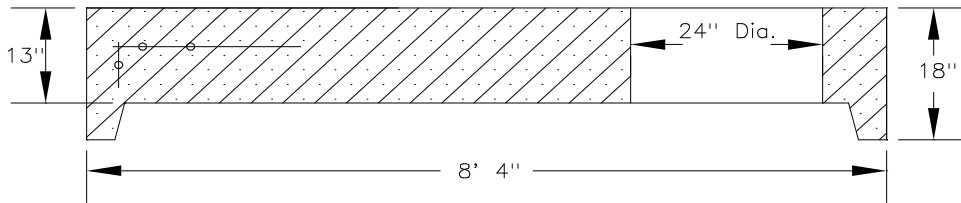


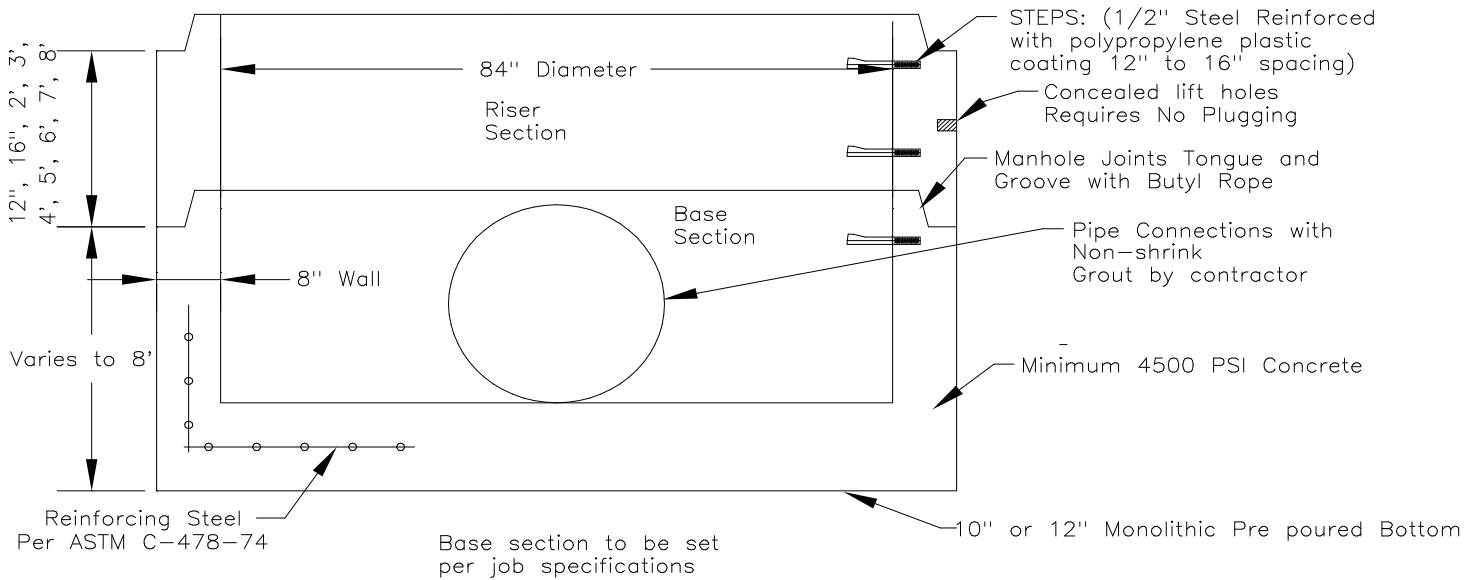
Alternate Top Slab is
Steel Reinforced to meet or
exceed H-20 Loading

WEIGHTS:	
Wall =	2410 #/ft
Base =	4400 #
Separate Base =	7700 #
Flat Top =	8300 #
Transitional Lid =	8300 #



NOTE: This is manufactured
in accordance with ASTM C-478
and INDOT Spec. 907.04

Adjust to Grade as Required —
with Riser Rings 2", 3", 4" or 6"



PRECAST CONCRETE

84" DIA. MANHOLE

MIDWEST **M** TILE &
CONCRETE PRODUCTS, INC.

4309 Webster Road
Woodburn IN 46797
Phone: 219-749-5173
Fax: 219-493-2477

6301 Ardmore Ave
Fort Wayne IN 46809
Phone: 219-478-9098
Fax: 219-747-7590

Drawing Name: 84-MH.DWG
Date: 2/16/98
Drawn By: Darrin Good
Revised By: Paul Tucker 7/14/99
Checked By: Al Crosland