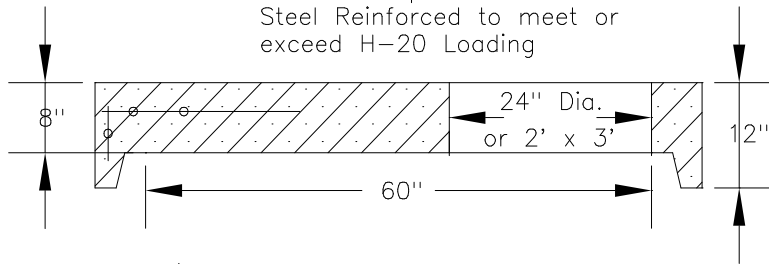
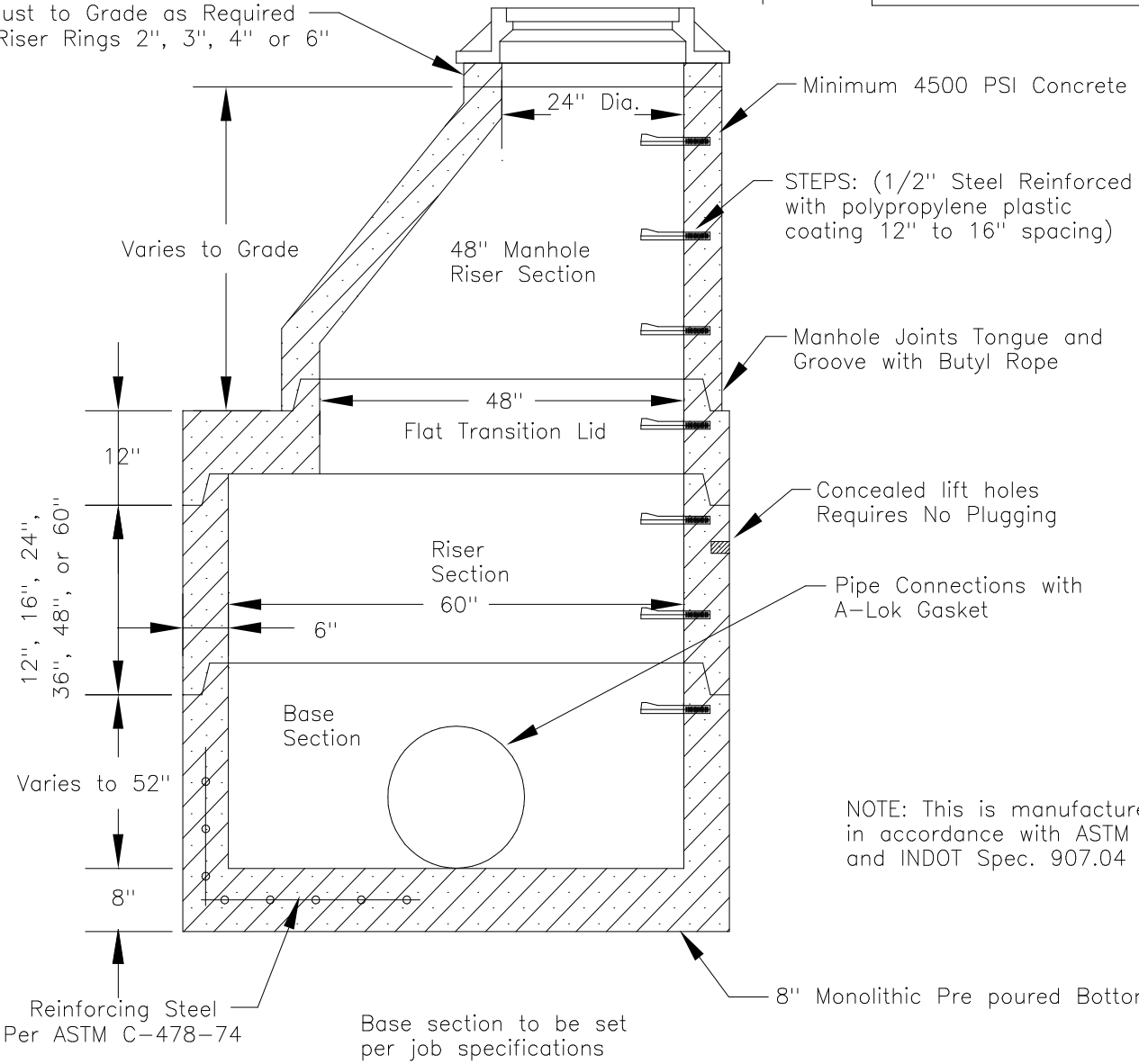


Alternate Top Slab is
Steel Reinforced to meet or
exceed H-20 Loading



WEIGHTS:	
Wall	= 1300 #/ft
Base	= 2400 #
Separate Base	= 4000 #
Flat Top	= 2800 #
Transitional Lid	= 2800 #

Adjust to Grade as Required
with Riser Rings 2", 3", 4" or 6"



NOTE: This is manufactured
in accordance with ASTM C-478
and INDOT Spec. 907.04

PRECAST CONCRETE

60" DIA. MANHOLE



4309 Webster Road
Woodburn IN 46797
Phone: 219-749-5173
Fax: 219-493-2477

6301 Ardmore Ave
Fort Wayne IN 46809
Phone: 219-478-9098
Fax: 219-747-7590

Drawing Name: 60-MH.DWG

Date: 2/16/98

Drawn By: Darrin Good

Revised By: Paul Tucker 2/15/2000

Checked By: Al Crosland