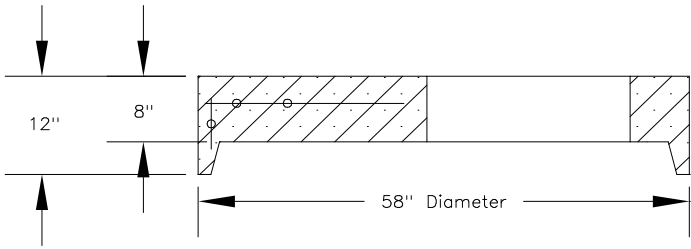
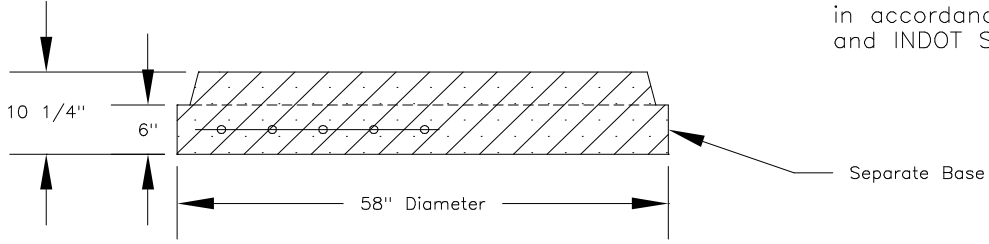
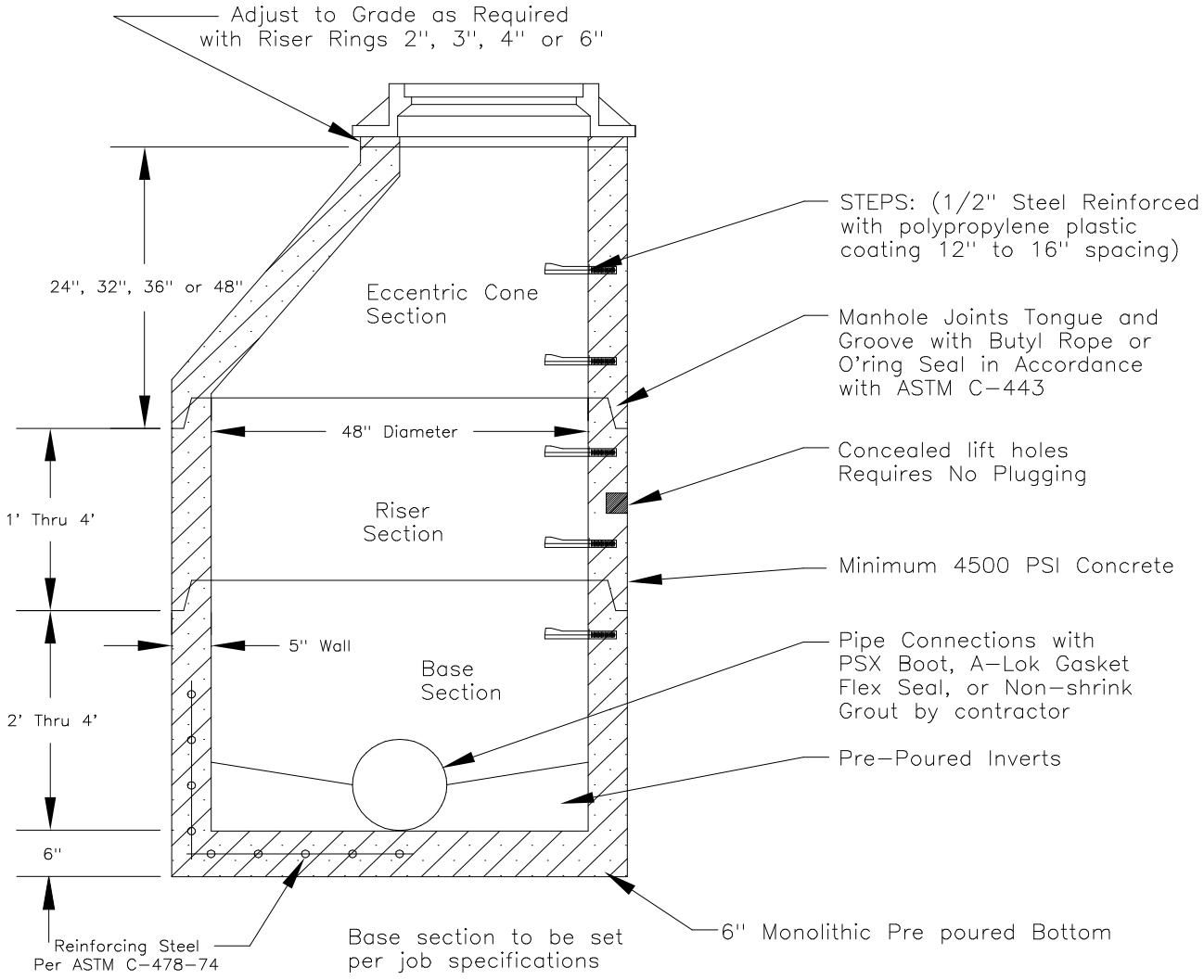


Alternate Top Slab is
Steel Reinforced to meet or
exceed H-20 Loading



WEIGHTS:	
Wall	= 850 #/ft
Base	= 1200 #
Separate Base	= 2100 #
Flat Top	= 1500 #
Poured Invert	= 1400 #



NOTE: This is manufactured
in accordance with ASTM C-478
and INDOT Spec. 907.04

PRECAST CONCRETE

48" DIA. MANHOLE



CONCRETE PRODUCTS, INC.
4309 Webster Road Woodburn IN 46797
Phone: 219-749-5173 Fax: 219-493-2477
6301 Ardmore Ave Fort Wayne IN 46809
Phone: 219-478-9098 Fax: 219-747-7590

Drawing Name: 48-MH.DWG

Date: 2/16/98

Drawn By: Darrin Good

Checked By: Al Crosland