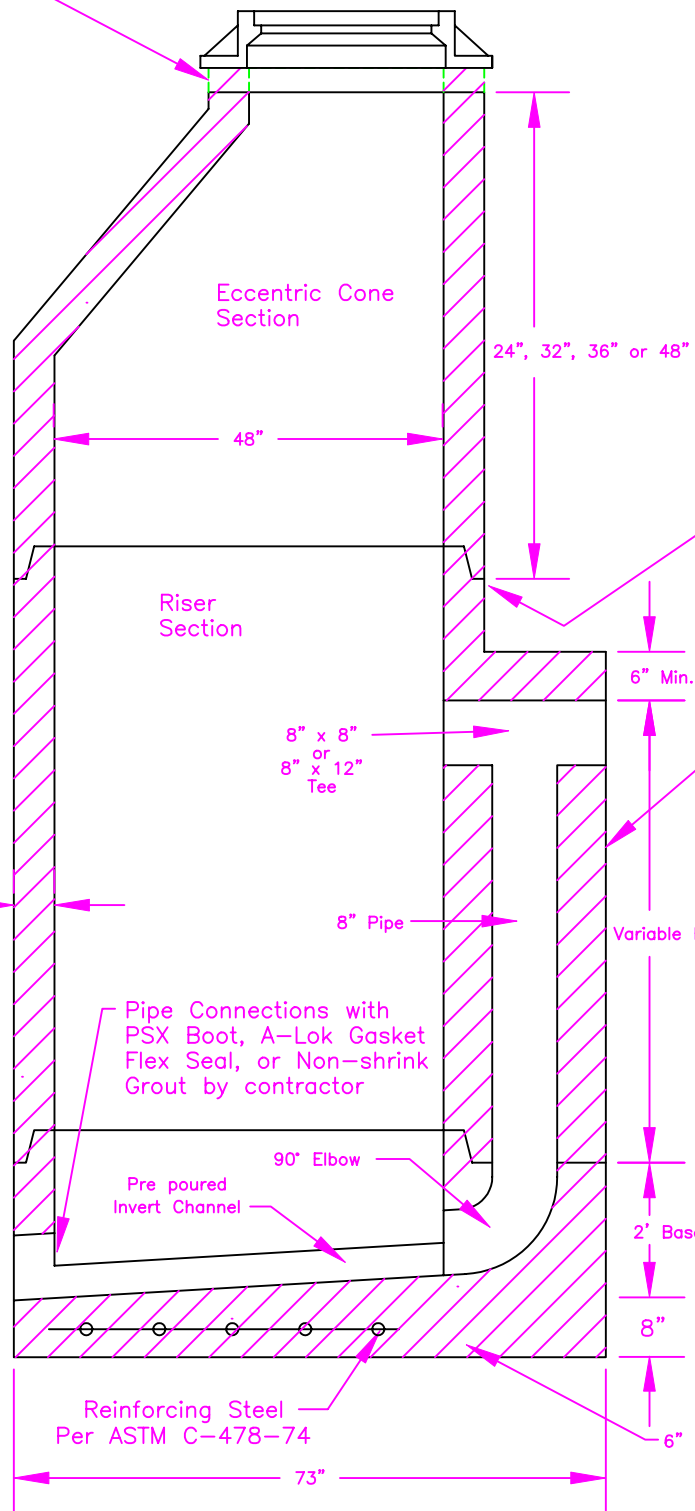
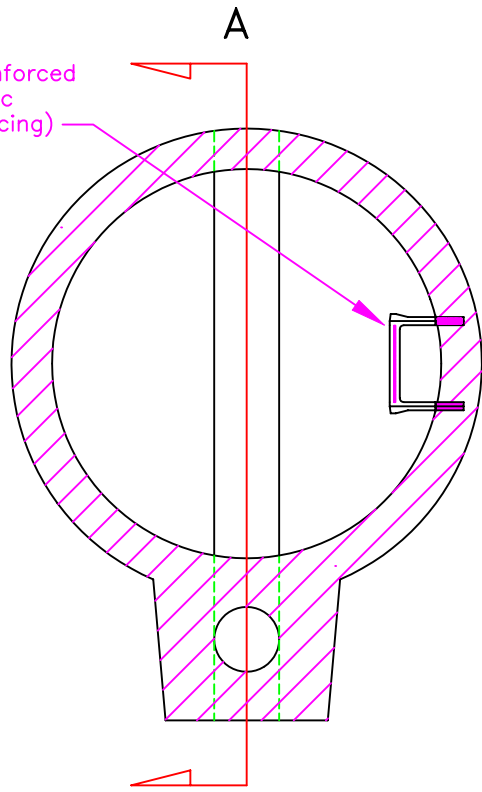


Section A-A

STEPS: (1/2" Steel Reinforced with polypropylene plastic coating 12" to 16" spacing)

Adjust to Grade as Required with Riser Rings 2", 3", 4" or 6"



Manhole Joints Tongue and Groove with Butyl Rope or O'ring Seal in Accordance with ASTM C-443

Minimum 4500 PSI Concrete

Concealed lift holes Requires No Plugging

NOTE: This is manufactured in accordance with ASTM C-478 and INDOT Spec. 907.04

WEIGHTS:	
Wall =	850 #/ft
Wall with Drop Box =	1160#/ft
Base =	1200 #
Flat Top =	1500 #
Poured Invert =	1400 #

PRECAST CONCRETE

DROP MANHOLE

MIDWEST **M** TILE &

CONCRETE PRODUCTS, INC.

4309 Webster Road
Woodburn IN 46797
Phone: 219-749-5173
Fax: 219-493-2477

6301 Ardmore Ave
Fort Wayne IN 46809
Phone: 219-478-9098
Fax: 219-747-7590

Drawing Name: 48-DMH.DWG

Date: 2/16/98

Drawn By: Darrin Good

Revised By: Paul Tucler 7/14/99

Checked By: Al Crosland